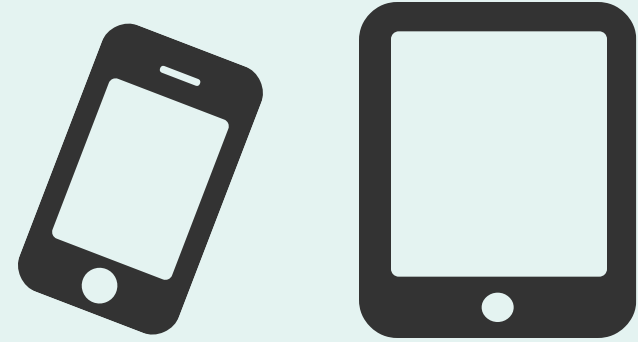


# Designing for those who have experienced trauma

through domestic or intimate partner violence

## Do...

design with mobile and touchscreen in mind (e.g. use click-to-call phone numbers)



progressively disclose information



make sure safety alerts and info on getting help is unmissable



be inclusive of all people

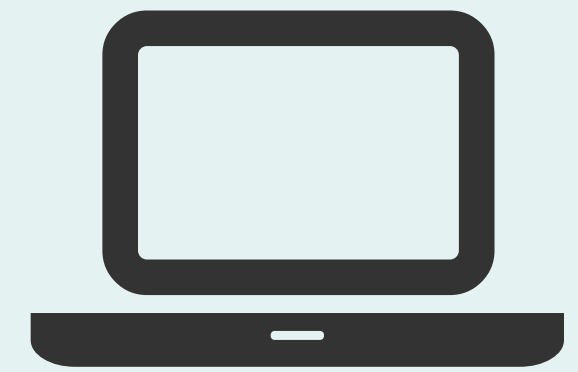


use quotes and/or images from real people (if safe to do)



## Don't...

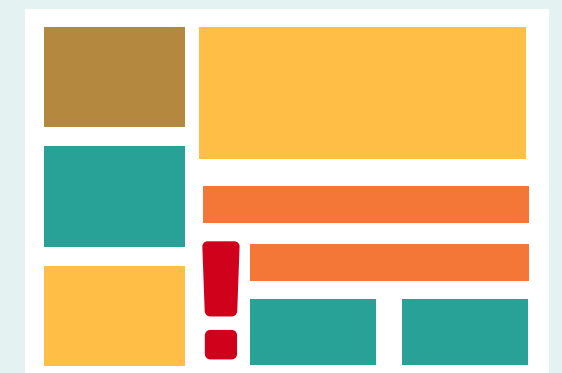
assume your visitors are on a desktop or laptop computer



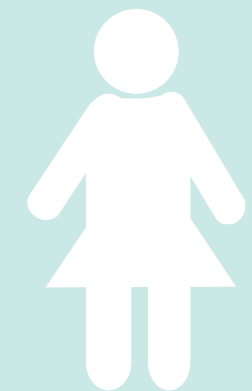
overwhelm with too many options



bury safety alerts and info on getting help on a cluttered web page



assume all survivors identify the same way



use triggering images that depict violence or uninformative stock photos

